

Access

We aim to make every customer's visit as enjoyable and comfortable as possible. With that in mind the following information details the access to all our sites in detail. If you require more specific information please contact our Inclusive Activity Officer on 01636 655701

Newark Sports & Fitness Centre -

Introduction

Services / facilities within the building include a fitness suite, sports hall, studio, 2 swimming pools and squash courts.

Location

The venue is situated within the centre of the village, on the outskirts of Hawtonville

There is a continuous unobstructed access route from Bowbridge Road

There is a bus stop within 100m of the venue.

The nearest mainline station is Newark Castle and Newark Northgate.

Parking

Parking is free for all users.

The car park is located at the front of the building.

The car park type is open air/surface.

Parking spaces for Blue Badge holders do not need to be booked in advance.

There are 4 Blue Badge parking bays within the car park.

The nearest Blue Badge bay is 35m from the main entrance.

The route from the car park to the entrance is accessible to a wheelchair user

Assistance may be required because there is / are dropped kerbs.

The car park surface is tarmac.

There is a dropped kerb between the car park and the venue.



Outside Access (Main Entrance)

There is a suitable setting down point for disabled passengers close to the principal entrance; this is also the bus drop off point.

The main door(s) open(s) automatically.

The door(s) is / are double.

The width of the door opening is 173cm (5ft 8in).

Reception

The reception is in sight of the entrance and identifiable

The reception desk is as two heights at 1112mm, with a length of 5775mm and a depth of 760mm

The corridor width is 3300mm



Inside Access

There is level access to the sports hall and swimming pools, other facilities are located on the first floor. These are studio, squash courts and fitness suite.

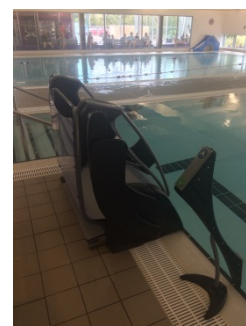
There is not a hearing assistance system.

This venue does play background music.

Music is played in the fitness suite.

Motorised scooters are allowed in public parts of the venue.

The lighting levels are varied.



Pool Access

We have 2 swimming pools on the ground floor

Our main pool is 25m x 12.5m

Our teaching pool is 20m x 8.5m

Entry to both pools is via fixed stairs into the pool

Other Floors

The first floor can be accessed by the stairs or the lift.

The steps have uniform height risers and treads of equal depth and a width. There are 12 steps then platform the 12 more steps

There is a handrail to both sides at above the line of pitch. The handrail shape is circular

Lift

There is a lift for public use

The lift is located at the rear of the building on the left handside of the corridor

The lift is a standard lift.

The floors which are accessible by this lift are ground to first floor.

Staff do not need to be notified for use of the lift.

The clear door width is 995mm.

The dimensions of the lift are 1100mm x 1400mm

There are support rails provided on the left looking into the lift, at 900mm high

There is a mirror to aid reversing out of the lift.

The lift does have a visual floor indicator.

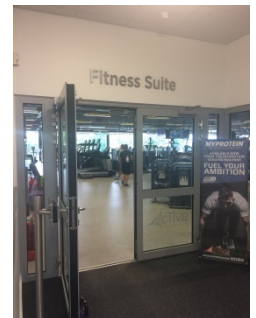
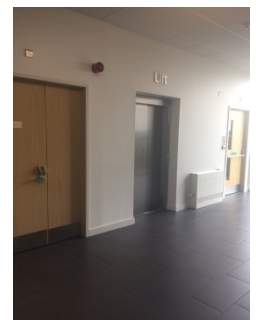
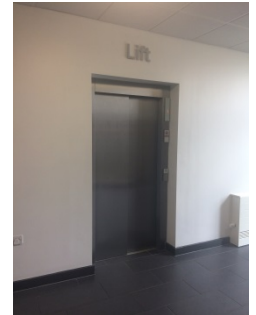
The lift does have an audible announcer

The controls for the lift are 1000mm high from the floor.

The lift does have Braille markings.

The lift does not have tactile markings.

The lighting level in the lift is medium.



Fitness Suite

The fitness suite is located on the first floor.

There is level access to the fitness suite.

Level access is by lift or stairs.

There are doors into the fitness suite.

The doors open away from you (push).

The doors are card operated and quite heavy.

All staff receives basic disability awareness training.

A portable hearing loop is not available for induction.

There is clear manoeuvring space between equipment.

There is level access to all of the equipment.

Accessible Toilets

We have 2 accessible toilets located on the ground floor next to reception; the toilet is not for the sole use of disabled people. There is another accessible toilet on the 1st floor located next to the fitness suite.

There is pictorial signage on toilet doors.

There is level access to all accessible toilets.

This is a unisex toilet.

A key is not required for the accessible toilet.

Lights are activated automatically

Ground floor toilet doors, 1 opens outwards and the other inwards

The width of the accessible toilet door is 900mm.

The door is light.

The dimensions of the accessible toilet are 1530mm x 2740mm

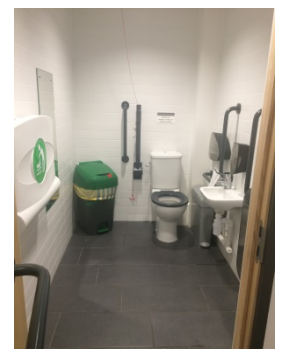
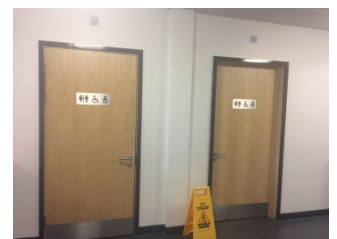
One toilet allows for right transfer and the other on the ground floor allows for left transfer

There is a dropdown rail on the transfer side

There is a mixer tap.

There is an emergency alarm.

The emergency pull cord alarm is fully functional.



Disposal facilities are available in the cubicle.
There is a/are female sanitary and non-infectious waste disposal units.

Accessible changing areas

We have 2 accessible changing areas both on the ground floor. One is wet side changing and the other dry side changing.

Room sizes are 1530mm wide x 2740mm deep

Doors open outwards on both changing areas and are 900mm wide

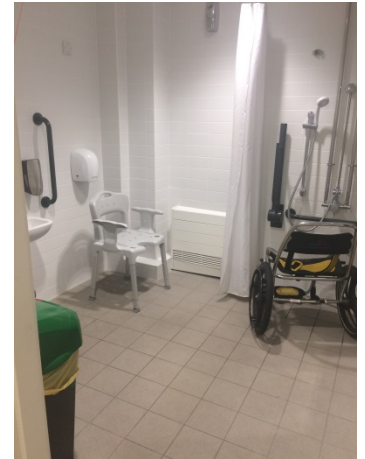
Both have showers and fixed seating in, with a moveable changing chair also

Lights are activated automatically

Lockers are accessed outside both changing areas

There is an emergency assistance alarm, which provides audible warning outside the WC.

There is an alarm cord, which is located near the WC and is from ceiling to floor



Changing Places Area



Additional Info

All staff receives disability awareness / equality training.

Documents can be requested in large print.

A bowl of water can be provided for an assistance dog.

A member of staff trained in BSL skills is not normally on duty.

Dukeries Leisure Centre

Southwell Leisure Centre

Blidworth Community Leisure Centre